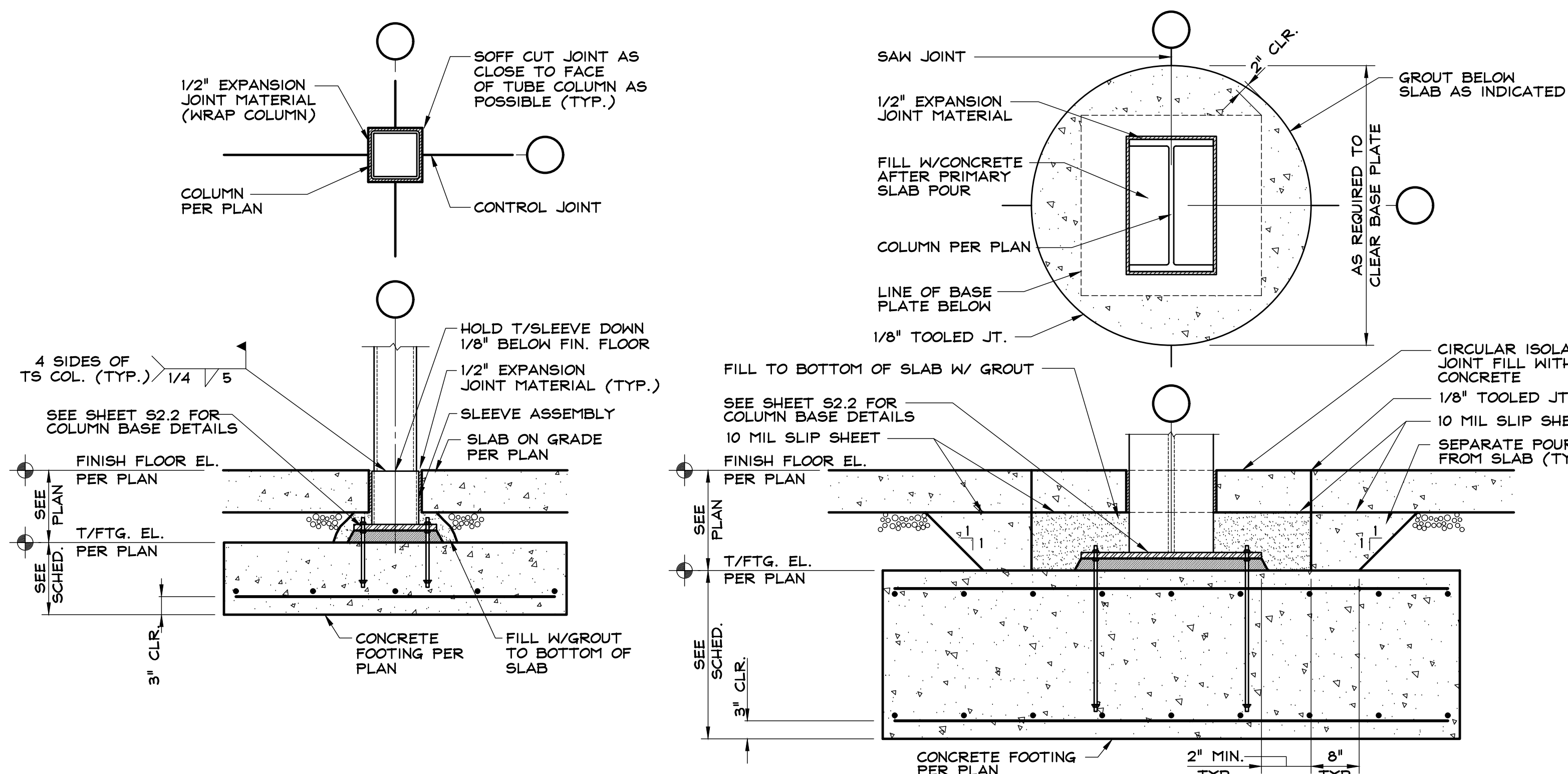


NO.	DATE	DESCRIPTION
12.08.21		PROGRESS
1.28.22		PROGRESS
2.28.22		85% PROGRESS
3.19.22		100% PROGRESS
5.24.22		PUMP HOUSE
6.9.22		PERMIT
7.8.22		FTG STEPS & JOIST SEAT @ A



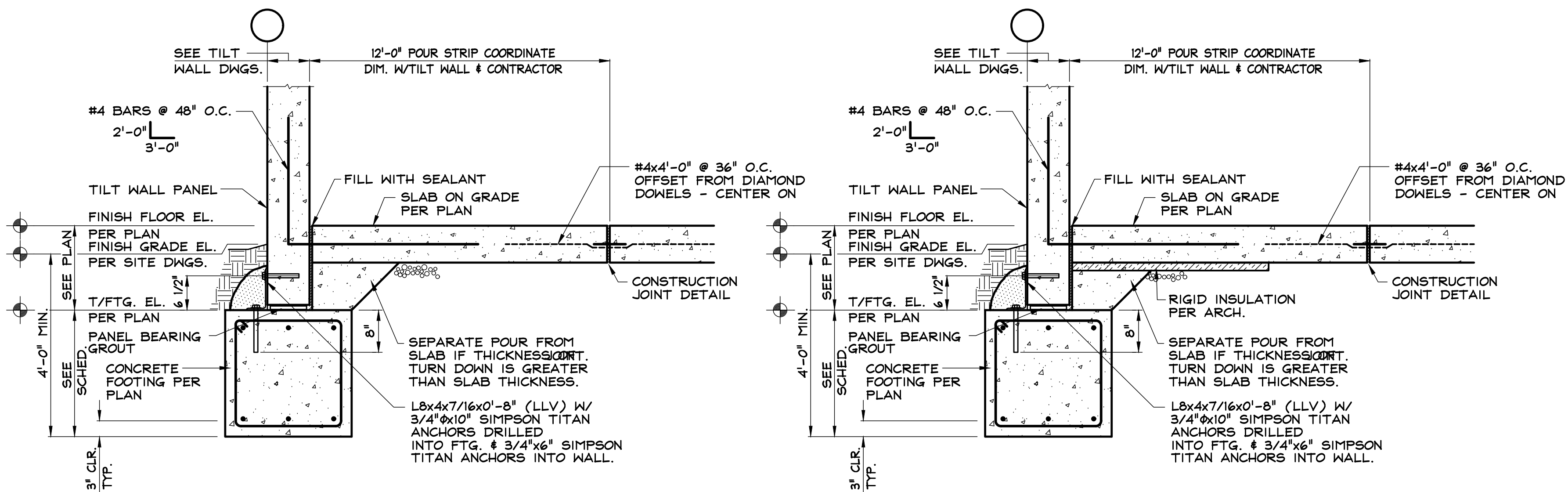
### SECTION 1

SCALE: 3/4" = 1'-0"

(ARCO DETAIL S1.10- SECTION AT TYPICAL COLUMN 11/12/18)

### SECTION 1A

SCALE: 3/4" = 1'-0"



### SECTION 2

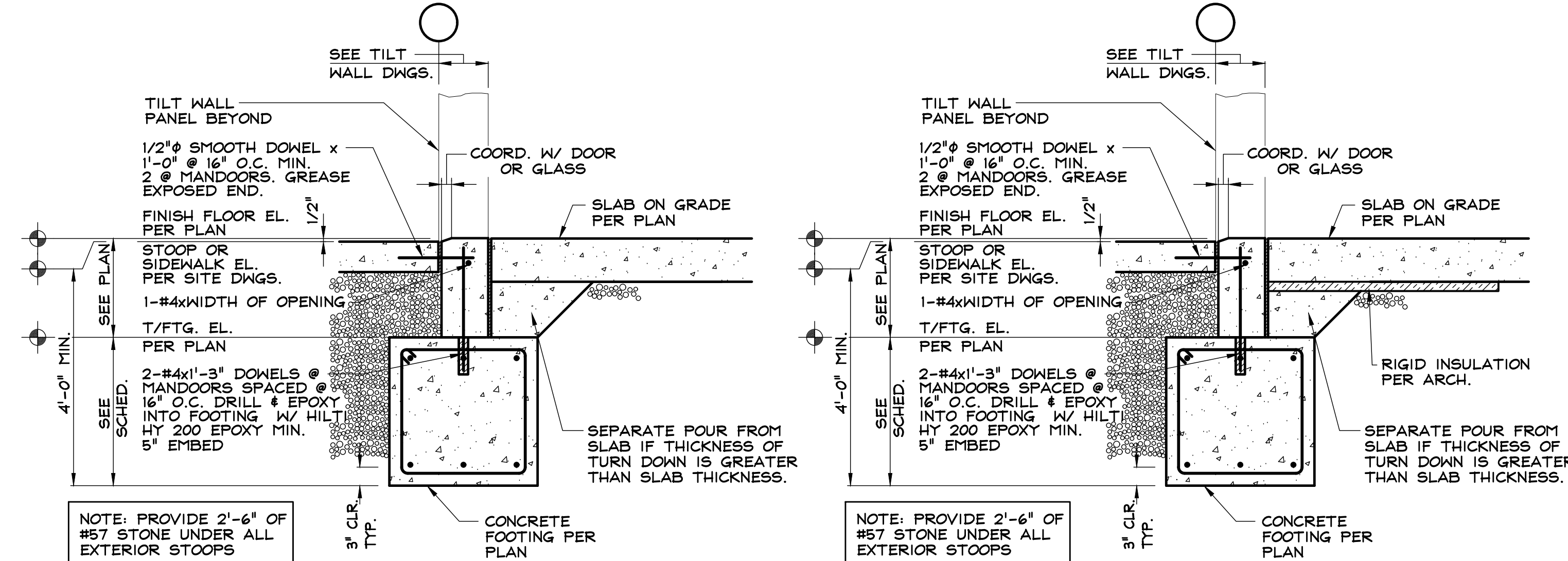
SCALE: 3/4" = 1'-0"

(ARCO DETAIL S1.12- WALL SECTION WITH HIGH FOUNDATION AND TURNDOWN 11/12/18)

### SECTION 2A

SCALE: 3/4" = 1'-0"

(ARCO DETAIL S1.12- WALL SECTION WITH HIGH FOUNDATION AND TURNDOWN 11/12/18)



### SECTION 3

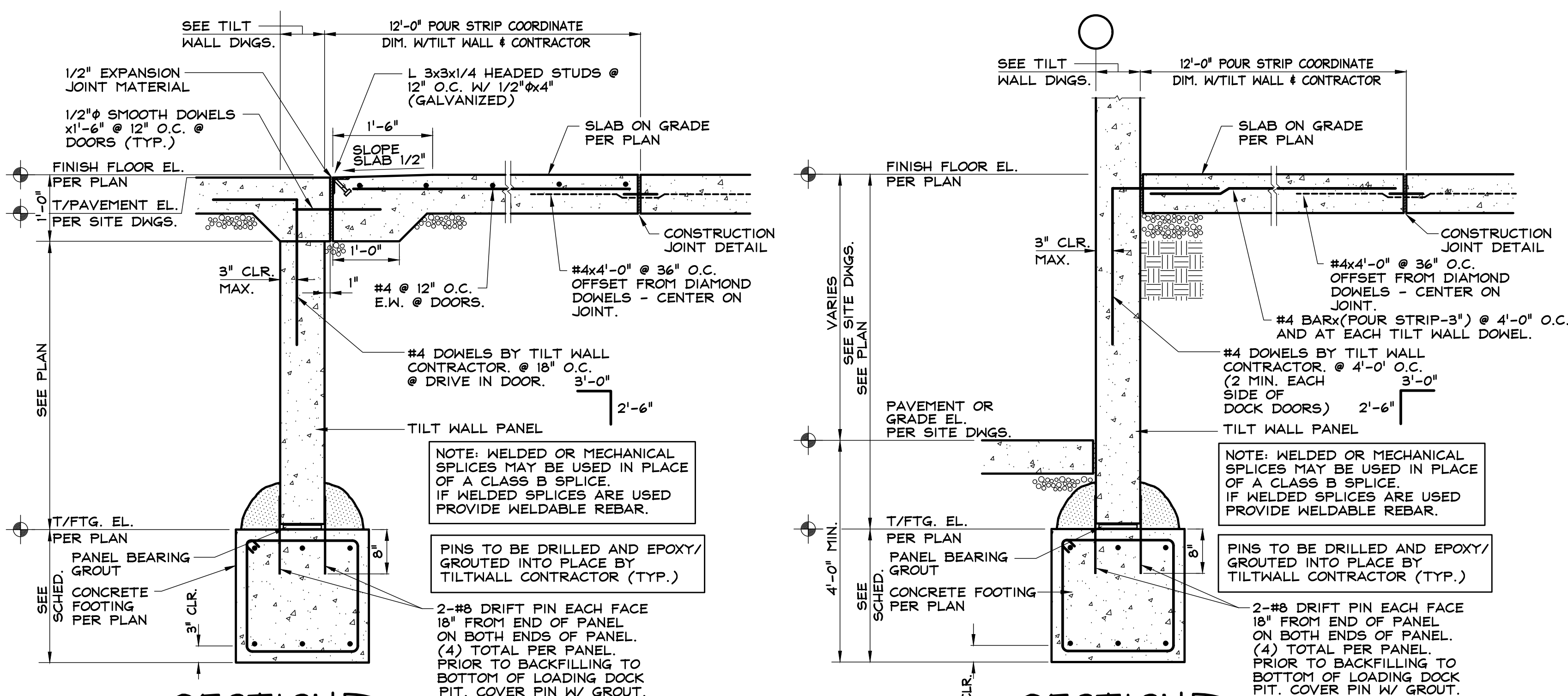
SCALE: 3/4" = 1'-0"

(ARCO DETAIL S1.13- WALL SECTION WITH MAN DOOR 11/12/18)

### SECTION 3A

SCALE: 3/4" = 1'-0"

(ARCO DETAIL S1.13- WALL SECTION WITH MAN DOOR 11/12/18)



### SECTION 4

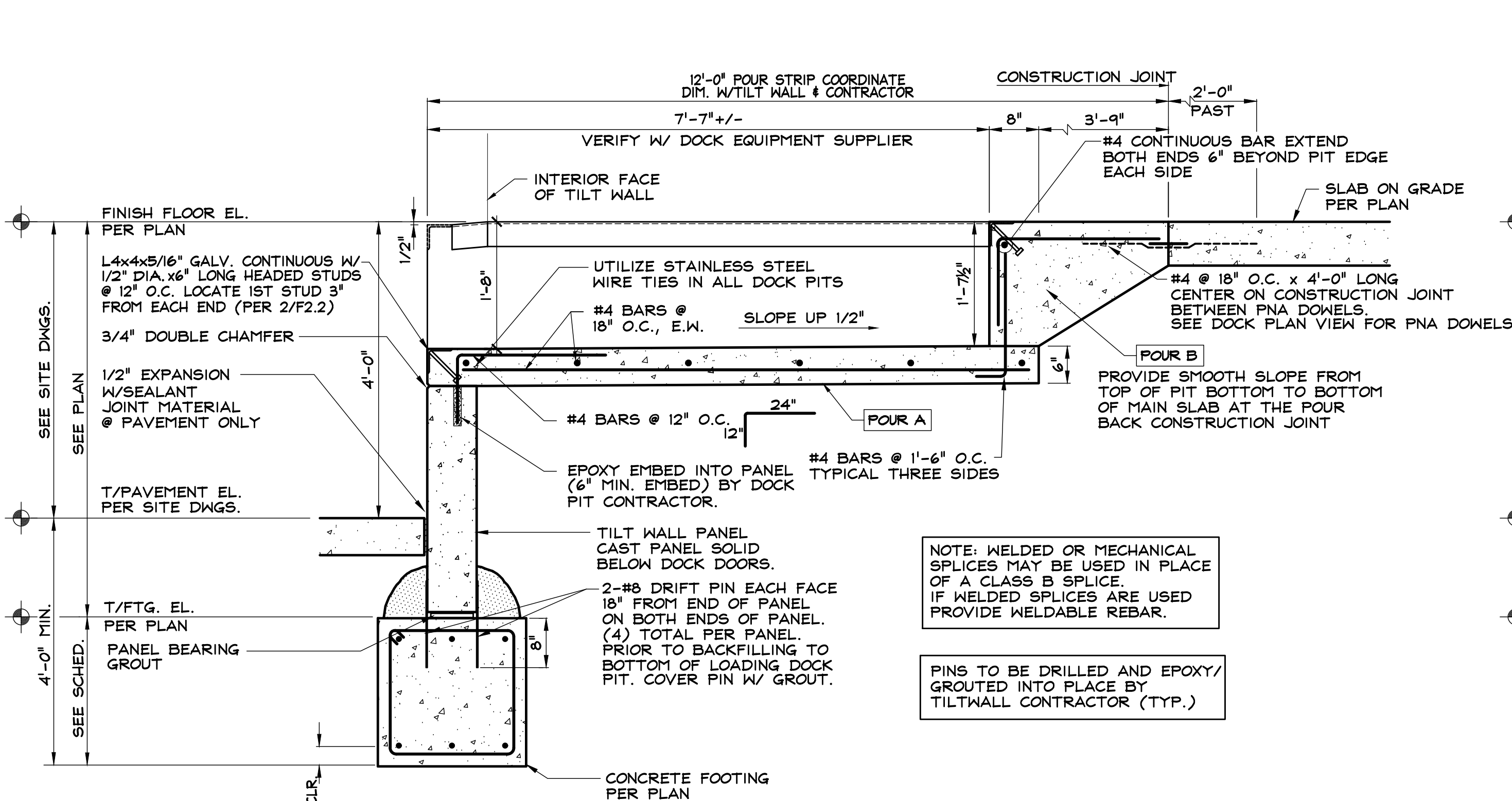
SCALE: 3/4" = 1'-0"

(ARCO DETAIL S1.6 - DRIVE IN DOOR SILL CONDITION 11/12/18)

### SECTION 5

SCALE: 3/4" = 1'-0"

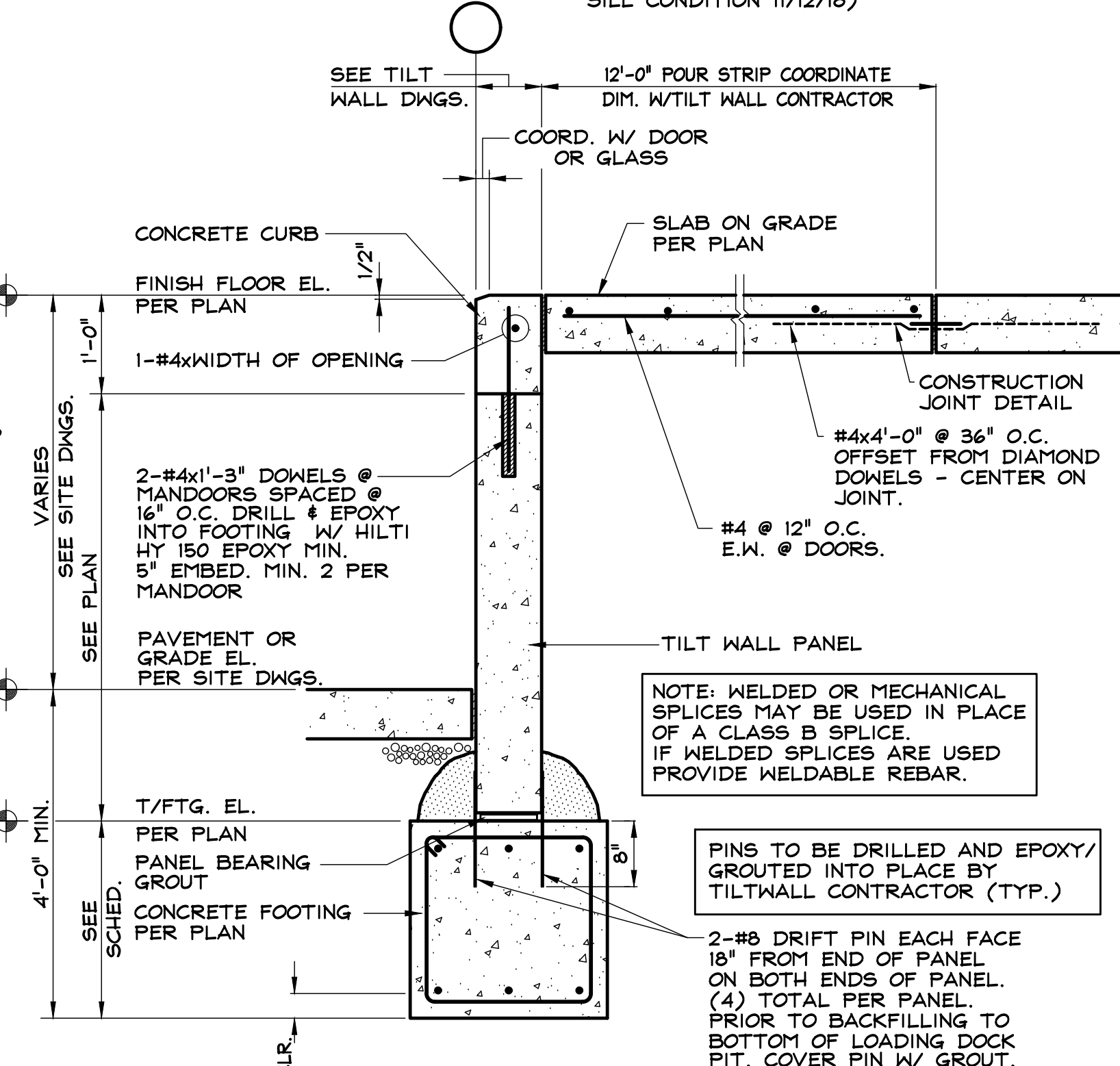
(ARCO DETAIL S1.15 - WALL SECTION AT DOCK WALL POURBACK 11/12/18)



### SECTION 6

SCALE: 3/4" = 1'-0"

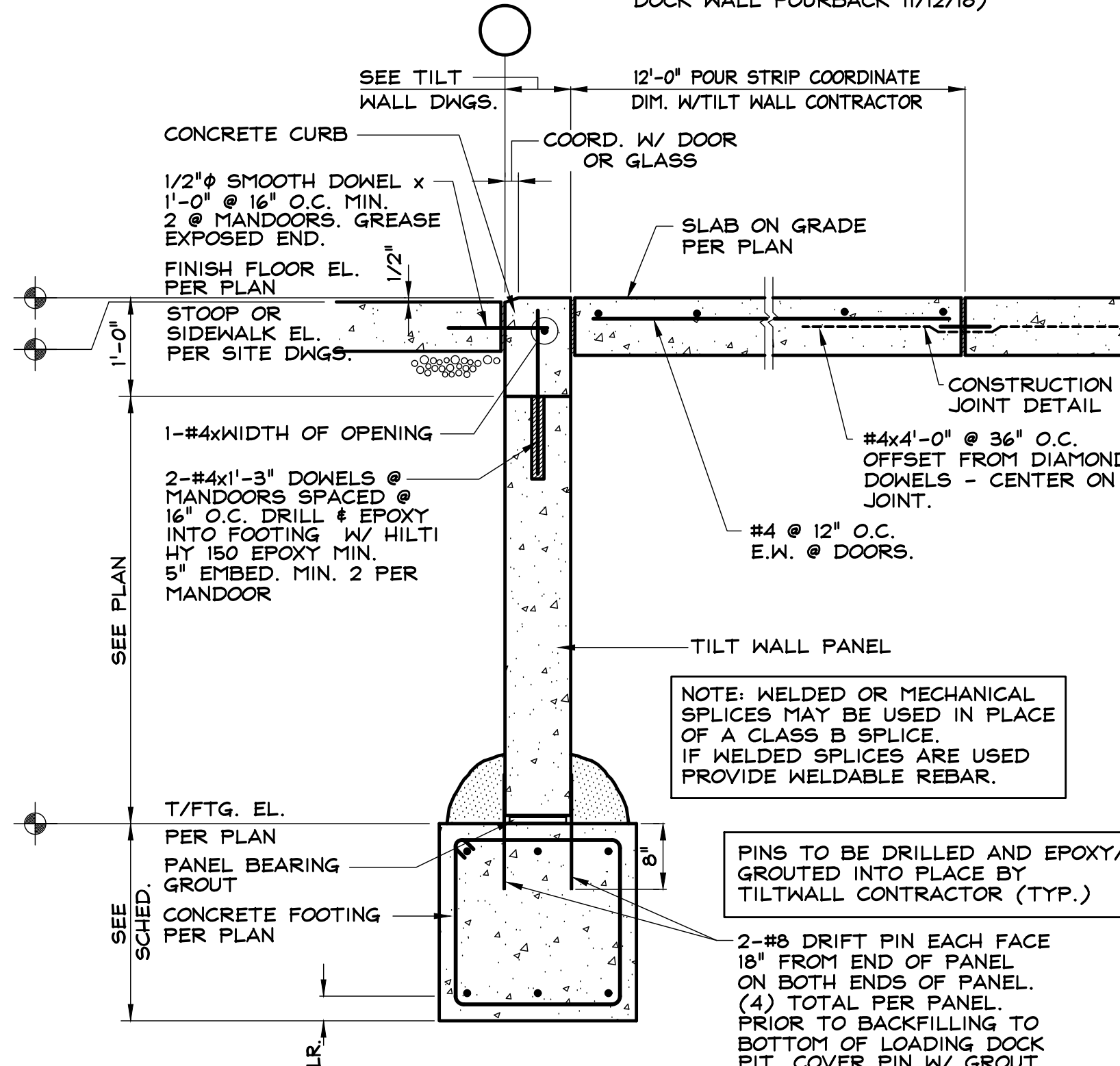
(ARCO DETAIL S1.3- DOCK/PIT CROSS SECTION 11/12/18)



### SECTION 7

SCALE: 3/4" = 1'-0"

(ARCO DETAIL S1.14 - WALL SECTION WITH MANDOR AT DOCK WALL 11/12/18)



### SECTION 8

SCALE: 3/4" = 1'-0"